



Protecting waters, woods, and wildlife for future generations.

A History of Conservation Work

LLAWF is a regional 501(c)3 nonprofit conservation organization which works to protect the most critical and sensitive land and water resources, including 800 of Minnesota's 4,500 managed fishing lakes in the Leech Lake River watershed in Aitkin, Cass, Crow Wing, and Hubbard Counties. Since its inception in 1992, the Foundation has worked with federal, state, county and other organizations to protect 20.20 miles of shoreland and 2,236 acres of critical fish and wildlife habitat.

Who We Are

About Us

The mission of the Leech Lake Area Watershed Foundation (LLAWF) is to promote activities that preserve and sustain the natural resources in the Leech Lake Watershed and neighboring region of North Central Minnesota, including Hubbard, Cass, Crow Wing, and Aitkin counties, for the use and enjoyment of current and future generations.

Contact Us

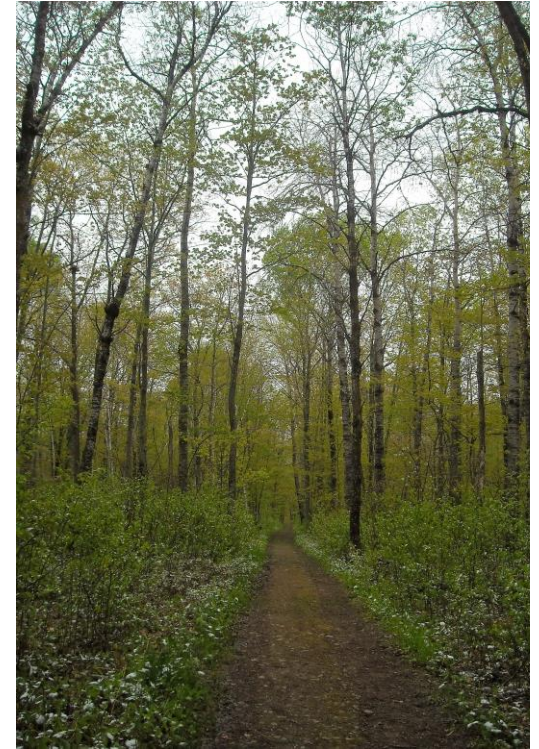
We look forward to learning more about your interest in making a difference for future generations. Please contact us.

Executive Director: Lindsey Ketchel
Phone: 218-675-5773
Email: info@leechlakewatershed.org
Web: www.leechlakewatershed.org

Front photo credit: Kristina Knutson



**LEECH LAKE AREA
WATERSHED
FOUNDATION**
PO Box 455
Hackensack, MN 56452



LEECH LAKE AREA
WATERSHED FOUNDATION

Legacy Conservation Fund

*Honoring the Memory of
Special People in Our Lives*



Honoring the Memory of Special People in Our Lives

When loved ones and special people in our lives pass away, we search for a meaningful way to honor their memory and lasting impact on us. A memorial gift to the Leech Lake Area Watershed Foundation (LLAWF) Legacy Conservation Fund establishes a legacy in memory of cherished ones. Memorial gifts also help the Foundation to preserve and sustain the natural resources in the Leech Lake watershed in North Central Minnesota for the use and enjoyment of future generations.

Legacy Fund Leverages Land Protection Projects

The LLAWF Legacy Conservation Fund is being established for memorial donations which will be used to provide support for land protection projects. These land protection projects for critical fish and wildlife habitat may involve acquisition of land to protect its conservation value by a federal, state or county agency or conservation easements on private land to permanently protect our valuable waters from impacts of development.

A favorite quote of Isobel Brown's: "I like trees because they seem more resigned to the way they have to live than other things do." -Willa Cather

By helping landowners protect the "places they love" and promoting individual and community stewardship, a legacy of natural resources is conserved for the use and enjoyment of current and future generations.



[Isobel Brown]

Launching the New Legacy Conservation Fund

Contributions in memory of Isobel Brown, a long-time LLAWF supporter and board member, will launch the new Legacy Conservation Fund. Contributions in memory of others will be acknowledged to both the donor and survivors identified at the time of the donation.